

RS
400

RS
200

RS
Feva

Irish Nationals



Friday 21st to Sunday 23rd August Killaloe Sailing Club

SAILING INSTRUCTIONS

The notation '[NP]' in a rule of the sailing instructions (SIs) means that a boat may not protest another boat for breaking that rule. This changes RRS 60.1(a)

1. RULES

- 1.1. The event is governed by the rules as defined in The Racing Rules of Sailing, the Prescriptions of Irish Sailing and the rules of RS 400, RS 200 and RS Feva classes as appropriate.
- 1.2. Racing rules Race Signals AP, 31, 33, 35, 44.1, 60.1, 61.1(a), 60.3(b), 61.4(b), 61.2(b), A2, A5.1 and A5.2 will be changed. The changes appear, in full, in these sailing instructions.

2. CHANGES TO SAILING INSTRUCTIONS

Any change to the sailing instructions will be posted before 09:00 on the day it will take effect, except that any change to the schedule of races will be posted by 20:00 on the day before it will take effect.

3. COMMUNICATIONS WITH COMPETITORS

The official notices will be posted in the WhatsApp Group, this can be Joined by following this link [Official Noticeboard](#)

4. CODE OF CONDUCT

[DP] Competitors and support persons shall comply with reasonable requests from race officials.

5. SIGNALS MADE ASHORE

- 5.1. Signals made ashore will be displayed at the main club mast beside the green Shed.
- 5.2. When flag AP is displayed ashore, '1 minute' is replaced with 'not less than 45 minutes' in Race Signals AP. This changes race signals AP.

6. SCHEDULE OF RACES

See NOR 9.

7. CLASS FLAGS

- | | |
|---------|--|
| RS 400 | RS 400 Class Flag or if not available Numeral 1 |
| RS 200 | RS 200 Class Flag or if not available Numeral 2 |
| RS Feva | RS Feva Class Flag or if not available Numeral 3 |

8. RACING AREA

Racing will take place within a defined racing area on Lough Derg as shown in the Diagram in 11.

9. COURSES

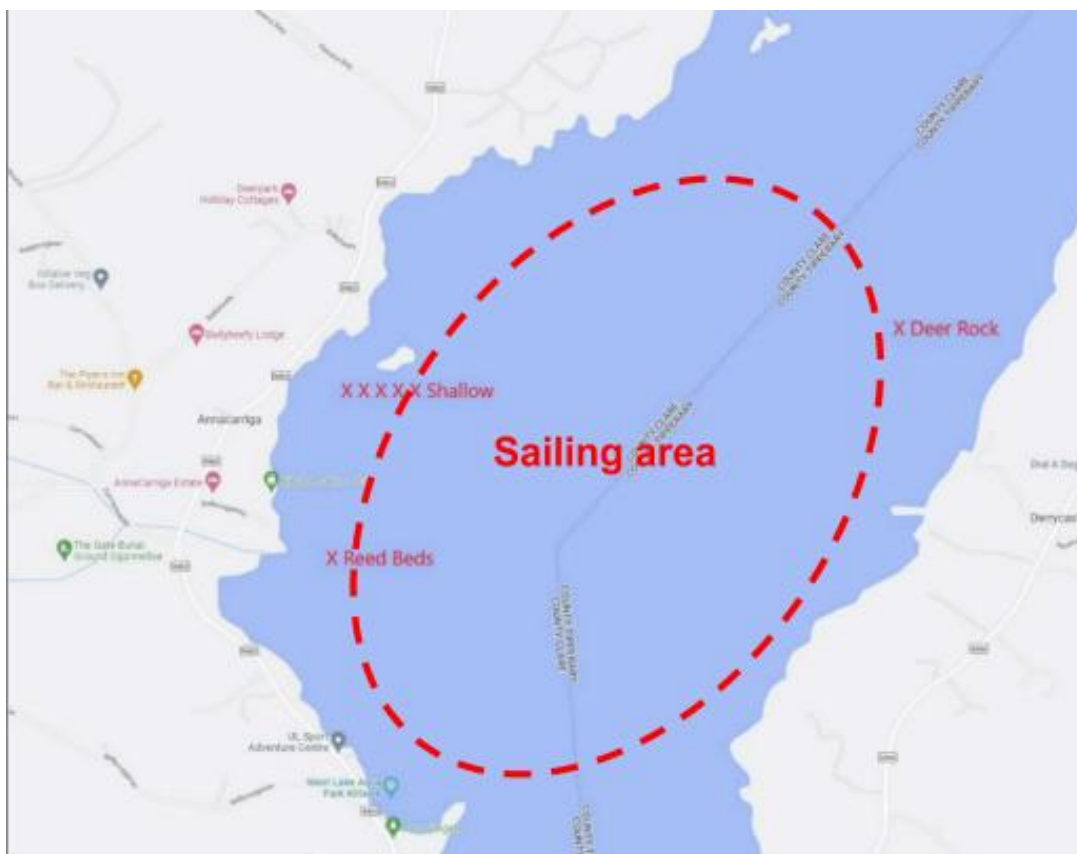
- 9.1. A Windward leeward or Trapezoid course will be used. The diagram in Addendum A shows the course, the order in which marks are to be passed, and the side on which each mark is to be passed.
- 9.2. The course to be sailed will be indicated by boards on the side of the committee boat.

10. MARKS

- 10.1. Marks will be described in the briefing. Details will also be posted on the official Noticeboard.
- 10.2. Hitting a mark other than the start or finish marks will not be penalised for the RS400 and RS200 Class only. This changes RRS 31.
- 10.3. If Robotic Marks are in use RRS31 will be in effect for all classes for those marks.
- 10.4. If one or other of the gate marks is missing, the remaining mark shall be rounded to port.

11. OBSTRUCTIONS

The following are obstructions – Deer Rock Marked on the Map below in a red X, there are also reed beds in various locations, and shallow ground near Goat Island all shown as red X's



12. THE START

- 12.1. The starting line will be between a defined Location on the committee boat displaying an orange flag at the starboard end and the course side of a port-end starting mark.
- 12.2. A boat that does not start within 5 minutes after her starting signal will be scored Did Not Start without a hearing. This changes RRS A5.1 and A5.2.

13. CHANGE OF THE NEXT LEG OF THE COURSE

- 13.1. To change the next leg of the course, the race committee will move the original mark (or the finishing line) to a new position.
- 13.2. Minor course changes may not be signaled. This changes RRS 33.

14. THE FINISH

The finishing line unless the race is shortened will be between a defined location on the committee boat displaying a blue flag at the starboard end and the course side of the port-end finishing mark.

15. PENALTY SYSTEM

See NoR 14.

16. TIME LIMITS

- 16.1. Boats failing to finish within a 15-minute finishing window after the first boat in her class sails the course and finishes will be scored Did Not Finish without a hearing. This changes RRS 35, A5.1 and A5.2
- 16.2. In addition to RRS 32, the race committee may also award a finishing score to a boat that is still racing by displaying to her from a committee vessel (which may be in motion) flag W with one sound signal. A boat so notified is no longer required to sail the course, shall stop racing and shall return to the starting area, or return ashore if there is no more racing. A finishing score under this sailing instruction will be the score she would have received had she sailed the course and finished within any time limit, without gaining or losing any place. However, when two or more boats that are overlapped are notified, they will be scored as if they were tied. The decision by the race committee to use this procedure or not to use it shall not be grounds for requesting redress. This changes rules 61.1(a) and 61.4(b).

17. HEARING REQUESTS

- 17.1. The protest time limit for protests about an incident observed in the racing area is 90 minutes after the last boat has finished the last race of the day or the race committee signals no more racing today, whichever is the later. This changes RRS 60.3(b) and 61.2(b).

17.2. Hearing Request forms are available at the race office.

17.3. Notices will be posted no later than 30 minutes after the protest time limit to inform competitors of hearings in which they are parties or named as witnesses. Hearings will be held in the protest room at common room inside KSC Club house

18. SCORING

As per NoR 15

19. SAFETY REGULATIONS

19.1. [DP] [NP] A boat that retires from a race shall notify the race committee as soon as possible.

19.2 Competitors shall use the tally system as described on the notice board

20. REPLACEMENT OF CREW OR EQUIPMENT

20.1. [DP] [NP] Substitution of competitors is not allowed without prior written approval of the race committee.

20.2. [DP] [NP] Substitution of damaged or lost equipment is not allowed unless authorised by the race committee. Requests for substitution shall be made at the first reasonable opportunity.

21. EQUIPMENT AND MEASUREMENT CHECKS

[NP] A boat or equipment may be inspected at any time for compliance with the class rules, notice of race and sailing instructions.

22. SUPPLIED BOATS

Does not apply.

23. OFFICIAL VESSELS

Official vessels will be identified at the Initial Briefing.

24. [DP] [NP] SUPPORT TEAMS

As per NoR 16

25. TRASH DISPOSAL

Trash may be placed aboard official or support person vessels.

26. BERTHING

[DP] [NP] Boats shall be kept in their assigned places in the dinghy park.

27. HAUL-OUT RESTRICTIONS

Does not apply.

28. DIVING EQUIPMENT AND PLASTIC POOLS

Does not apply.

29. PRIZES

As per NoR 24

30. RISK STATEMENT

As per NoR 22.

31. INSURANCE

As per NoR 23

ADDENDUM A – Courses

Windward – Leeward

L2 1, 4P/4S, 1, 4P, Finish

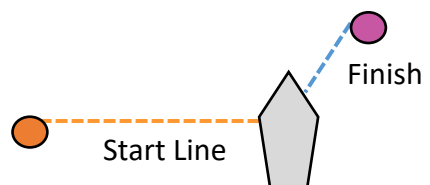
L3 1, 4P/4S, 1, 4P/4S, 1, 4P, Finish

L4 1, 4P/4S, 1, 4P/4S, 1, 4P/4S, 1, 4P, Finish

Marks 4P/4S are a gate

Marks 1 and 4P to be rounded to Port

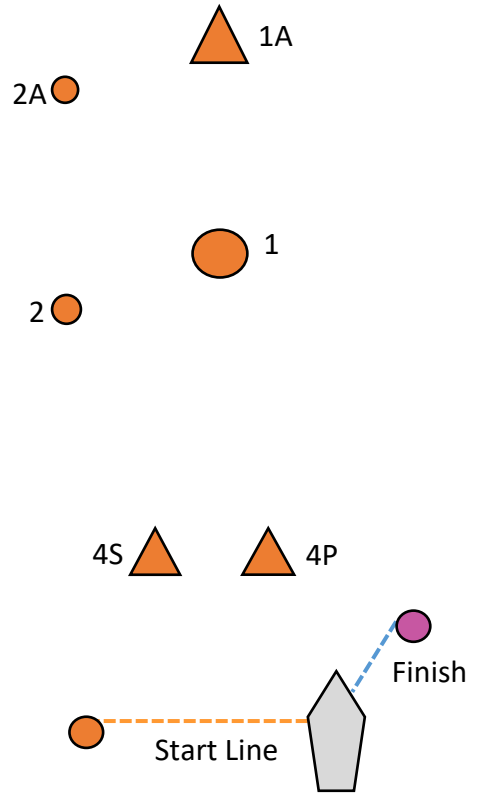
RS 400 Class will use Mark 1A instead of Mark 1



Windward – Leeward with Spreader

- S2 1, 2, 4P/4S, 1, 2, 4P, Finish
- S3 1, 2, 4P/4S, 1, 2, 4P/4S, 1, 2, 4P, Finish
- S4 1, 2, 4P/4S, 1, 2, 4P/4S, 1, 2, 4P/4S, 1, 2, 4P, Finish

Marks 4P/4S are a gate
 Marks 1 and 4P to be rounded to Port
 RS 400 Class will use Mark 1A & 2A instead of Mark 1 & 2



Trapezoid

- O1 1, 2, 3, Finish
- O2 1, 2, 3, 2, 3, Finish
- O3 1, 2, 3, 2, 3, 2, 3, Finish
- I2 1, 4, 1, 2, 3, Finish
- I3 1, 4, 1, 4, 1, 2, 3, Finish

Marks 1, 2, 3, and 4 to be rounded to port

